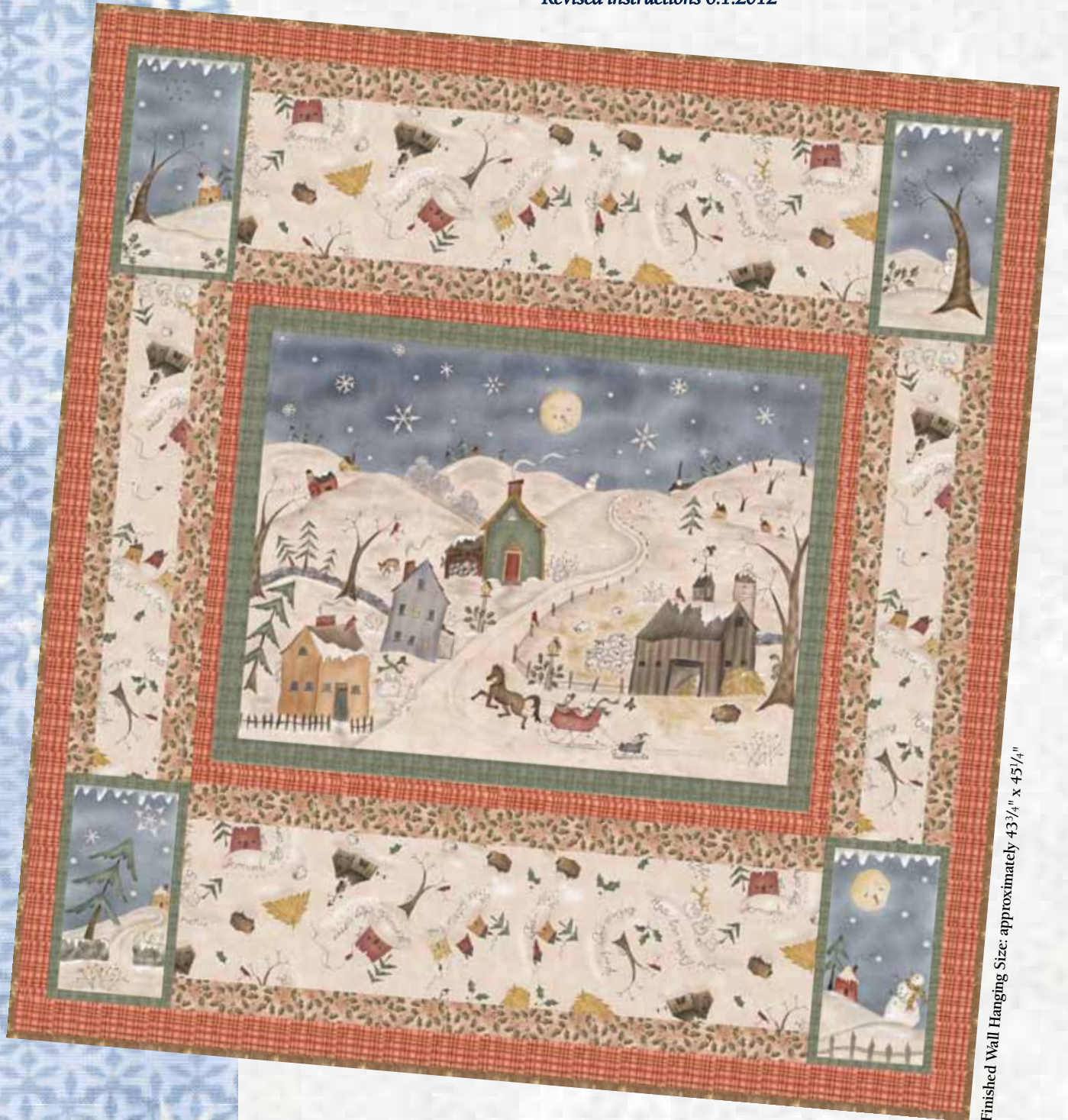


# Too Many Men

by Jacqueline Paton

Wall Hanging design by Heidi Pridemnore  
Revised instructions 6.1.2012



Finished Wall Hanging Size: approximately 43 3/4" x 45 1/4"

# This pattern has been revised to compensate for slight size changes that occurred in printing of the panel.

Fabrics from the Too Many Men fabric collection (Style #4182) by Jacqueline Paton for Red Rooster Fabrics.

## FABRIC REQUIREMENTS:

- A. Pattern #22675 – MUL1 ..... 1 Panel
  - B. Pattern #20961 – RED .....  $\frac{5}{8}$  yard
  - C. Pattern #22678 – BRO1 .....  $\frac{5}{8}$  yard
  - D. Pattern #22681 – MUL1 .....  $\frac{7}{8}$  yard
  - E. Pattern #22677 – BRO1 .....  $\frac{1}{2}$  yard  
(for binding)
- Backing..... 3 yards  
Batting..... 54" x 57"

## CUTTING INSTRUCTIONS:

Please read all instructions carefully before beginning.  $\frac{1}{4}$ " seam allowance is included in measurements and all strips are cut across the width of the fabric unless noted otherwise. Label pieces and keep together until ready to sew. These instructions are based on unwashed fabrics.

### A. Pattern #22675 – MUL1 (panel):

- Cut the center panel block a scant  $\frac{1}{4}$ " away from the green frame. Cut measurement will be approximately  $22\frac{1}{4}$ " x  $28\frac{3}{4}$ ".
- Cut the four small panels in the same manner. Cut measurement will be approximately  $6\frac{1}{4}$ " x  $11\frac{1}{4}$ ".

### B. Pattern #20961 – RED1 (rust plaid):

- Cut two  $1\frac{3}{4}$ " strips to frame top and bottom of center panel block.
- Cut two 2" strips to frame sides of center panel block.
- Cut five 2" strips. Sew strips together end to end and press. Cut into four equal lengths.

### C. Pattern #22678 – BRO1 (tan holly):

- Cut four 2" x  $31\frac{1}{2}$ " strips for the top and bottom borders.
- Cut four 2" x  $24\frac{1}{2}$ " strips for the side borders.

### D. Pattern #22681 – MUL1 (tossed houses):

- Cut two  $8\frac{1}{4}$ " x  $31\frac{1}{2}$ " strips for the top and bottom borders.
- Cut two  $3\frac{1}{4}$ " x  $24\frac{1}{2}$ " strips for the side borders.

### E. Pattern #22677 – BRO1

- (brown snowflakes):
- Cut five  $2\frac{1}{2}$ " strips for the binding.

## PIECING INSTRUCTIONS:

### A. Center Panel:

- Sew one 2" strip to each side of the block. Trim strip even with block; press.
- Sew one  $1\frac{3}{4}$ " strip to top and bottom of the block. Trim strip even with block; press (Figure 1).
- Trim framed block to  $24\frac{1}{2}$ " x  $31\frac{1}{2}$ ".

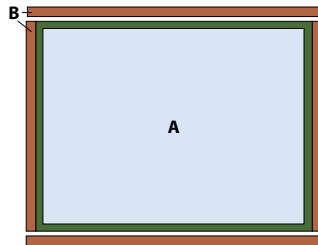
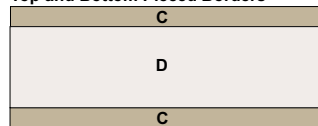


Figure 1

### B. Pieced Borders:

- Sew one 2" x  $31\frac{1}{2}$ " C strip to the top and bottom of one  $8\frac{1}{4}$ " x  $31\frac{1}{2}$ " D strip to make the top pieced border. Repeat to make the bottom pieced border.
- Sew one 2" x  $24\frac{1}{2}$ " C strip to the top and bottom of one  $3\frac{1}{4}$ " x  $24\frac{1}{2}$ " D strip to make one side border. Repeat to make the second side pieced border (Figure 2).

#### Top and Bottom Pieced Borders



#### Side Pieced Border

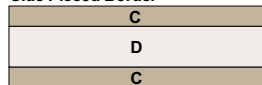


Figure 2

- Sew one small panel block to each end of the top and bottom pieced borders to complete the border sets (Figure 3).

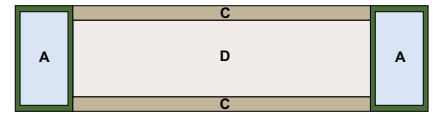


Figure 3

## QUILT ASSEMBLY:

Refer to Quilt Diagram.

- Sew each side pieced border to the center panel.
- Sew the top and bottom pieced borders to the center panel.
- Sew one 2" pieced strip to both sides of the quilt. Trim ends even with edges of quilt; press. Repeat using remaining 2" strips for the top and bottom of quilt.

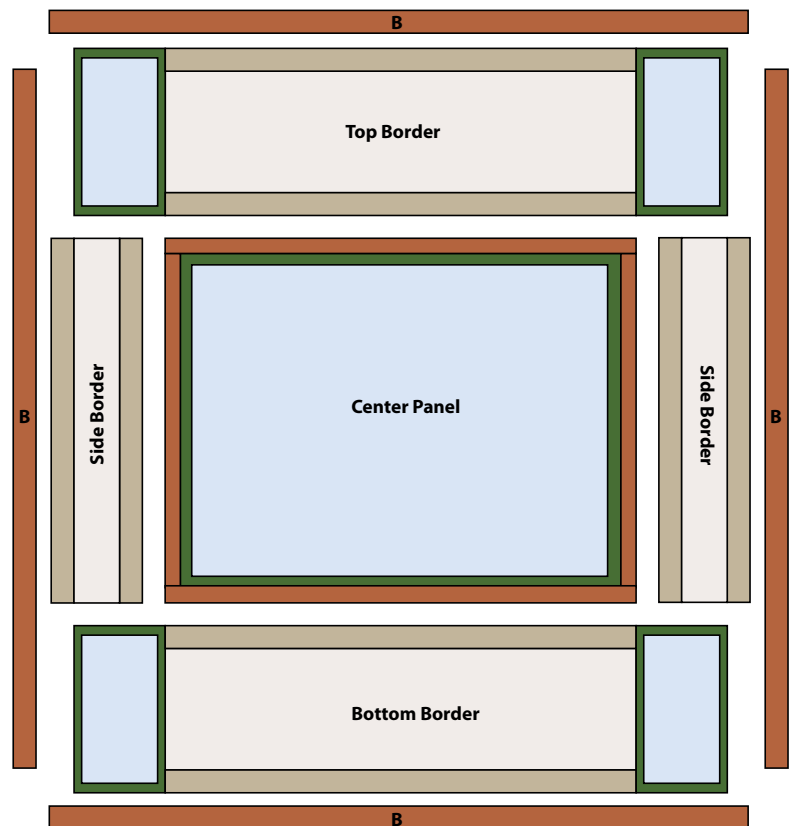
## FINISHING:

- Prepare backing to measure 54" x 57" square. Press seams open.
- Layer quilt top, batting and backing. Baste layers together.
- Quilt as desired.
- Trim layers even with quilt top.
- Sew binding strips together with diagonal seams. Press seams open. Sew binding to quilt using your favorite method.
- Make a hanging sleeve and sew to the back of quilt.

©2012 Red Rooster Fabrics. All rights reserved. Not intended for individual resale. The design for this Red Rooster Fabrics' pattern is protected by U.S. copyright law.

For additional copies of this pattern please call or write Red Rooster Fabrics at the address listed: 253 West 35th Street, 11th Floor, New York, NY 10001 • 401.728.4200  
www.redroosterfabrics.com

We take great care to ensure that the information included in our free pattern is accurate and presented in good faith. No warranty is provided nor results guaranteed. For your convenience, we post an up-to-date listing of corrections on our website: <http://www.redroosterfabrics.com/quilt/oops.php> If a correction is not noted, please contact our customer service department at [info@redroosterfabrics.com](mailto:info@redroosterfabrics.com). You may also call or write us at the address above.



Quilt Diagram